

Improving Investment in Tasmania's Built Heritage

Nick McShane - Stenning & Associates

and

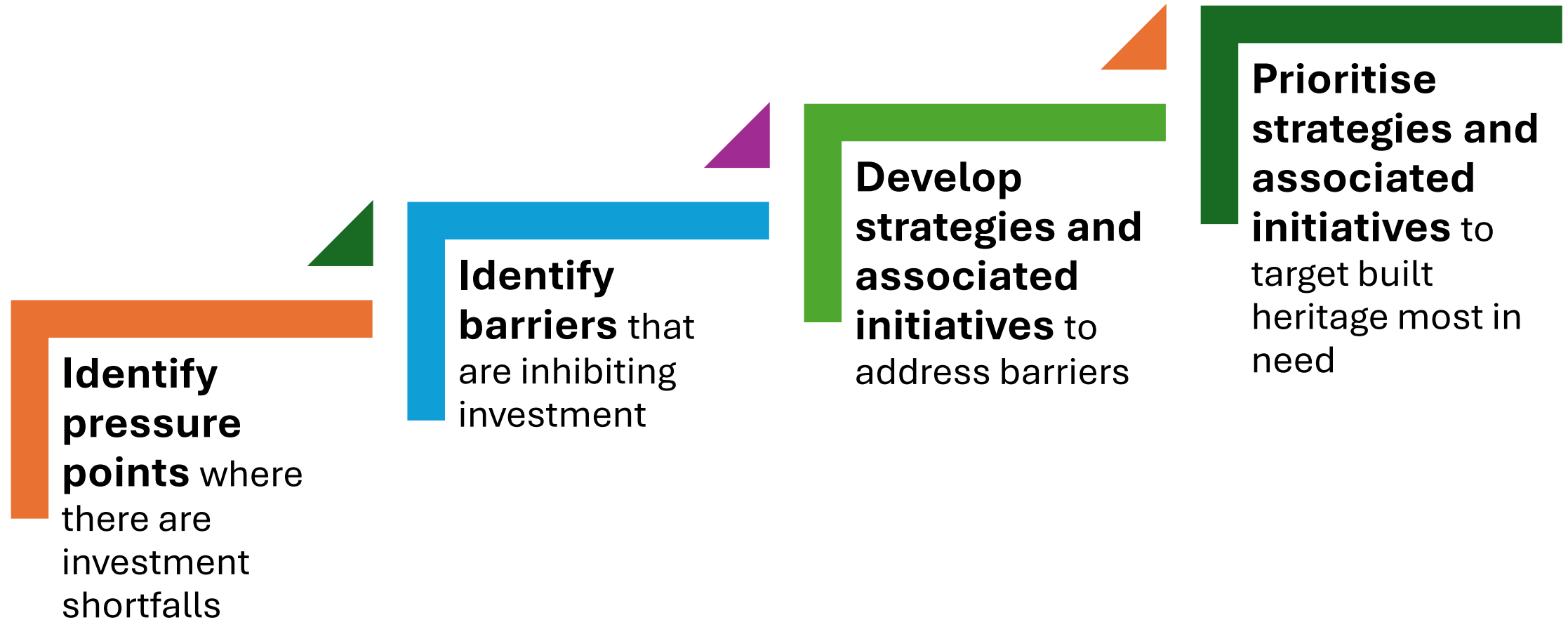
Kate Clark - Public Value Consulting

Our Task

- 2023 Historic Heritage Summit identified a need to *explore funding opportunities to facilitate improved maintenance, conservation and activation of Tasmania's built heritage*
- We were engaged to *identify effective, sector appropriate mechanisms for improving the expenditure/investment in the maintenance, conservation and activation of Tasmania's built heritage*



Our Approach



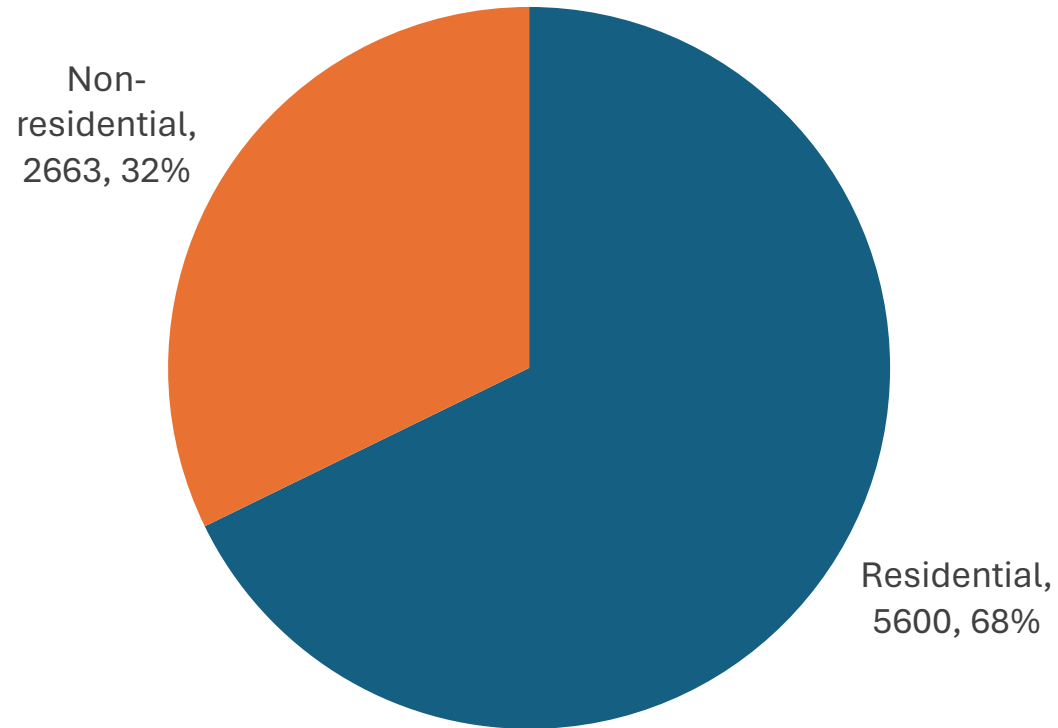
Built heritage in Tasmania

- Over 8000 listed built heritage places
 - Many more heritage places not formally listed
- Wide range of owners and occupiers
 - Public
 - Private
 - Not-for-profit
- Some funding available
 - Direct
 - Indirect

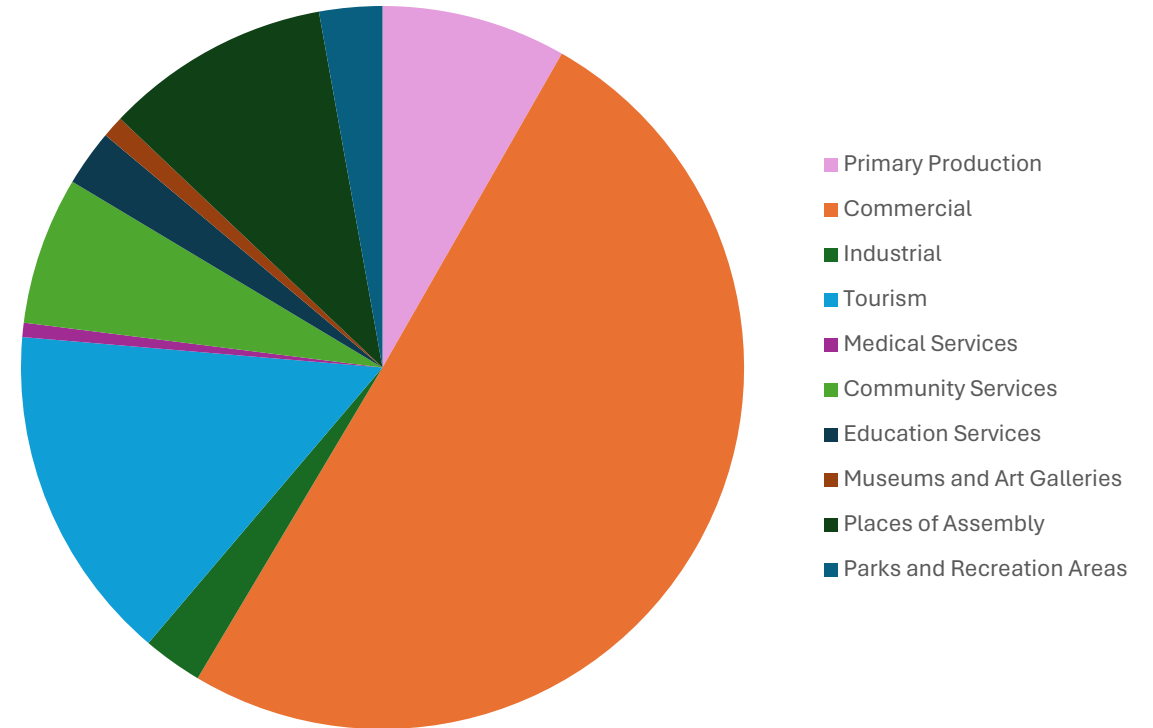


Listed places - usage

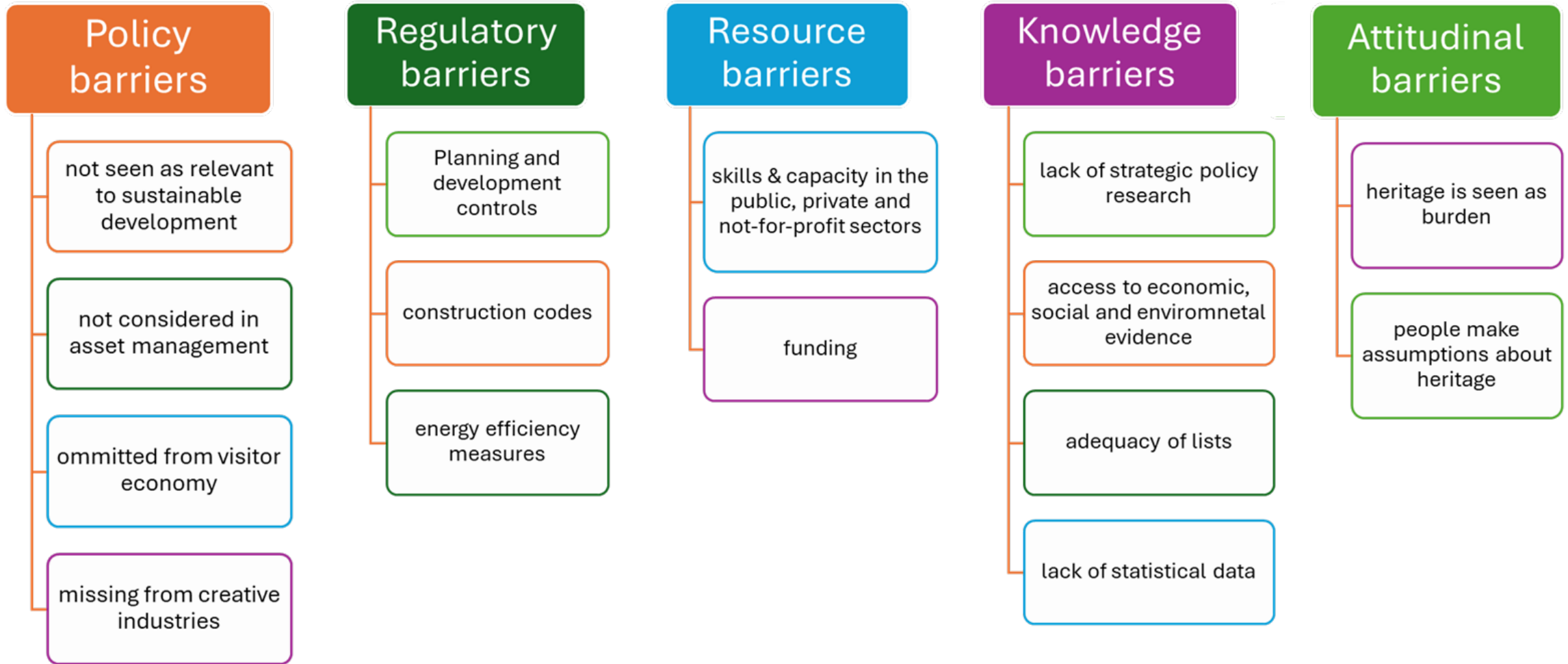
No. of Listed Places



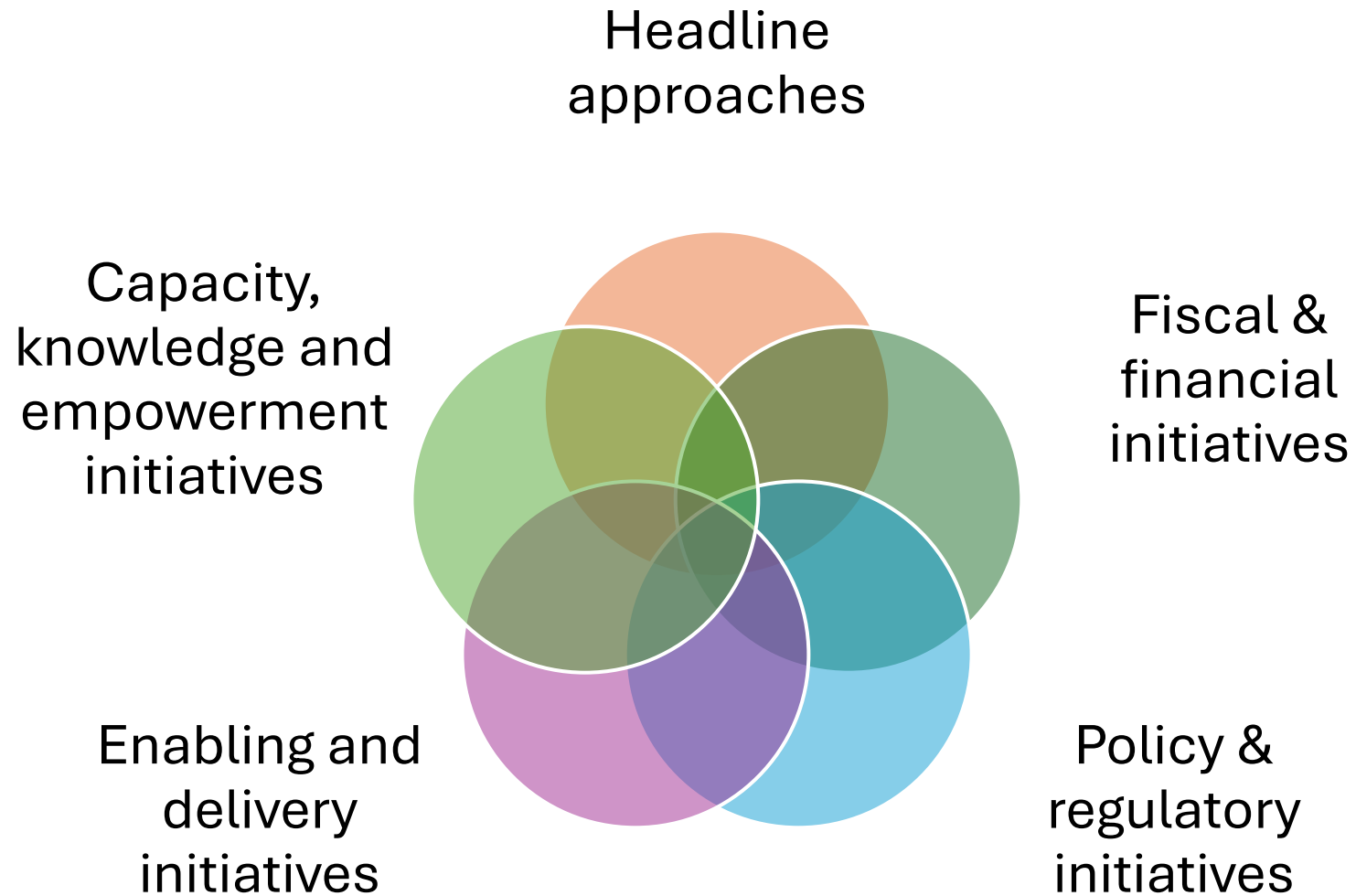
No. of Non-Residential Listed Places



Barriers to investing in built heritage



Initiatives to increase investment



Initiatives to increase investment

Headline approaches

Embedding the benefits of heritage in strategic policy

Fiscal & financial initiatives

Tax incentives

Levies and special charges

Targeted heritage funding – grants

Other public funding initiatives

Lotteries and gaming

Policy & regulatory initiatives

Land use planning initiatives

Asset management policy initiatives

Maintenance initiatives

Procurement policy initiatives

Technical initiatives and standards

Enabling and delivery initiatives

Not-for-profit organisations that manage former government heritage assets

Rolling buildings preservation trusts

Charitable funding sources for heritage

Capacity, knowledge and empowerment initiatives

Organisational capacity and resilience initiatives

Initiatives to support technical skills and knowledge

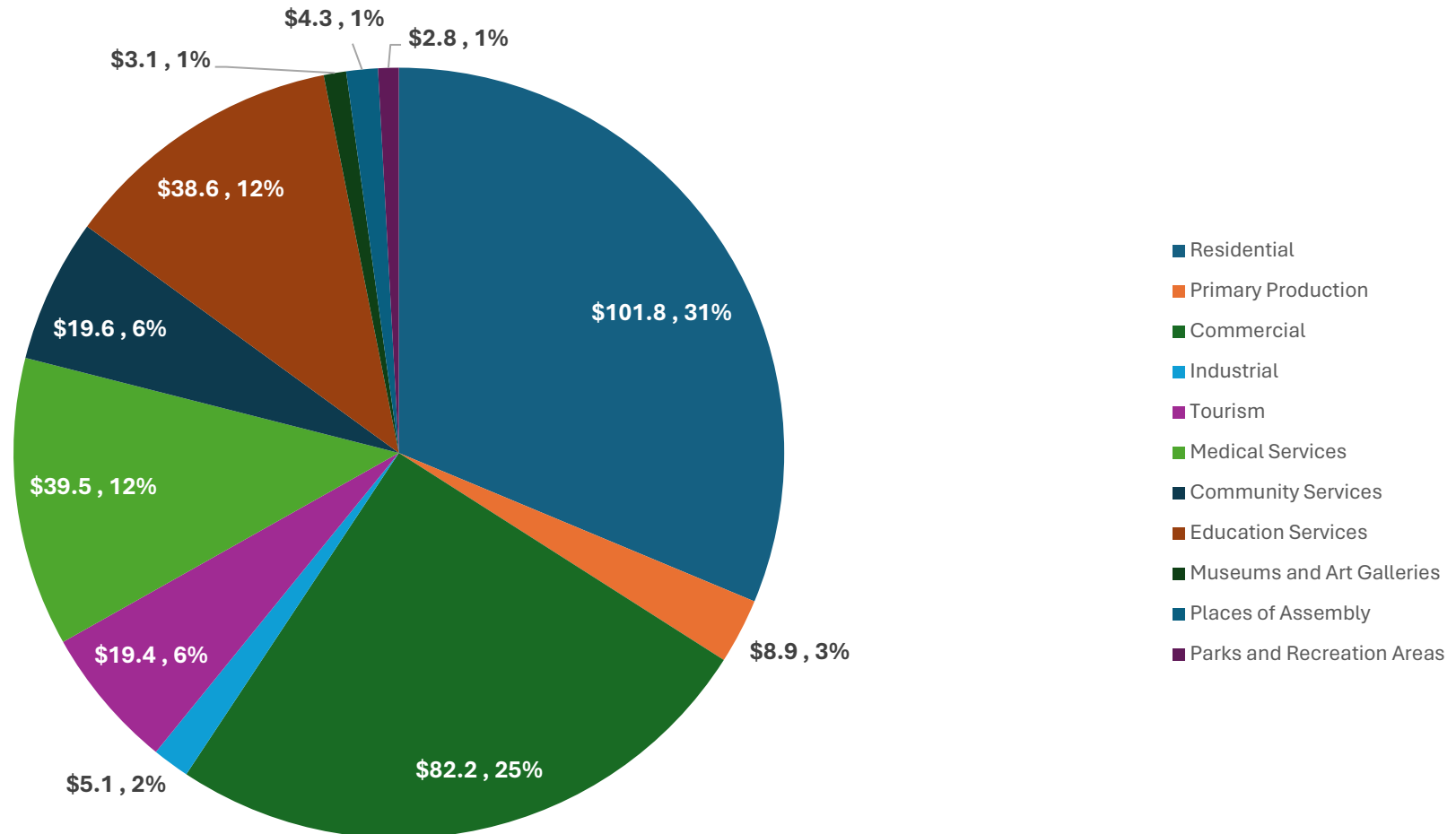
Empowering owners and occupiers

Research and data initiatives



Optimum Maintenance Expenditure

Maintenance Cost Per Annum – Listed Built Heritage (\$million)



Likely Tasmanian Pressure Points?

Built heritage where there is a significant maintenance backlog

Ruins and buildings that lack a beneficial use

Organisations caring for built heritage with weak revenue streams

Government owned built heritage assets that are open to the public

Built heritage where cultural significance limits revenue streams

Built heritage owners or operators that prioritise new work over maintenance

Standard practices that increase future built heritage maintenance costs

External impacts on the value of built heritage

Built heritage impacted by maintenance disincentives



Next Steps

- ✓ Common barriers to investment in built heritage
 - ✓ Range of initiatives to address barriers
 - ✓ Likely pressure points
 - ✗ Evidence to confirm and prioritise pressure points
-
- Tasmanian Heritage Council
 - work with stakeholders to explore the specific pressure points
 - gather evidence to confirm and prioritise

