

134 Macquarie Street (GPO Box 618)  
Hobart Tasmania 7001  
Phone: 1300 850 332 (local call cost)  
Email: [enquiries@heritage.tas.gov.au](mailto:enquiries@heritage.tas.gov.au)  
Web: [www.heritage.tas.gov.au](http://www.heritage.tas.gov.au)

**Name:** Holyman House  
**Status:** Provisionally Registered  
**Tier:** State

**THR ID Number:** 12097  
**Municipality:** Launceston City  
Council  
**Boundary:** CPR11443

**Location Addresses**

52-60 BRISBANE ST, LAUNCESTON 7250 TAS

**Title References**  
124078/1

**Property Id**  
6669047



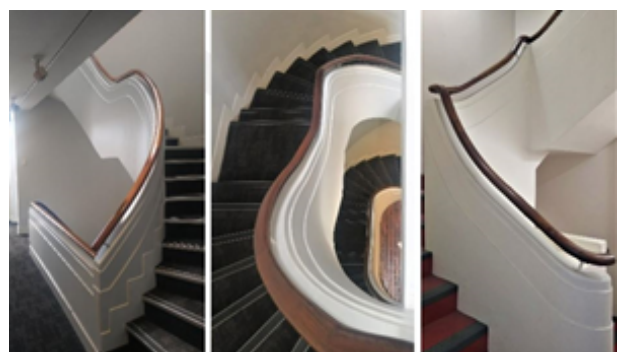
Facades – Corner of George and Brisbane Streets  
©NRE 2023



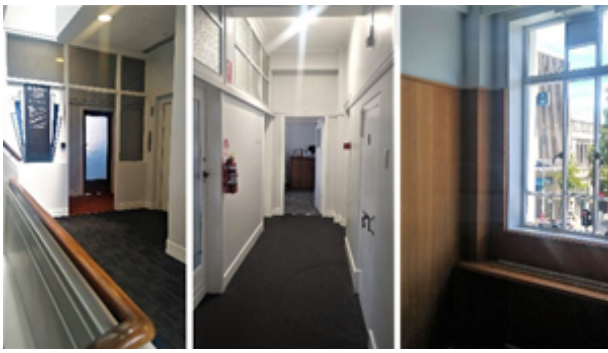
Beacon details – from street; roof top  
©NRE 2023



North-western side; Stone from foundation on rooftop  
©NRE 2023



Interior – Staircases  
©NRE 2023



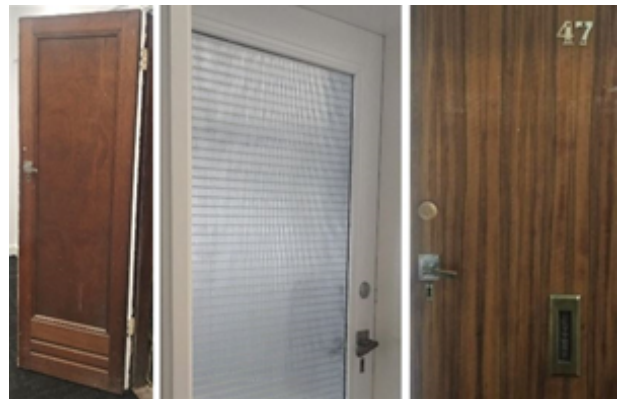
Interior – Hallways and offices  
©NRE 2023



Art Deco sign above office entry; chrome vent in lift; timber panelling to boardroom; Ansett carpet  
©NRE 2023



Interior – Strong room doors and door furniture  
©NRE 2023



Interior – Original doors and door furniture  
©NRE 2023



Architect's sketch of proposed building - 1935  
Examiner 14 December 1935



Promotional image prior to construction - 1936  
Examiner 21 May 1936

### Statement of Significance: (non-statutory summary)

Holyman House is of historic cultural heritage significance as a largely intact example of an Inter-war Moderne Art Deco office building, commissioned by a group of ground-breaking northern Tasmanian transport businesses. It was to serve as the headquarters and 'flagship' shopfront for nation leading companies Wm. Holyman and Sons (shipping) and Australian National Airways (ANA) from 1937 to 1957. The building continued its close association with air travel, being retained as the northern centre and community interface for Ansett Airlines for 40 years after its take-over of ANA, the iconic building becoming synonymous with the 'new' brand, even beyond the departure of the airline from the site in 1998.

As an imposing futuristic form occupying a prominent corner site in the inner city, the building is also of significance as a bold representation of the forward-thinking image and success of the Holyman group. With its spire and high quality Art Deco detailing inside and out, it is a demonstration of the confidence its founders had in the economic, social, and industrial future of Launceston. The building also displays the companies' innovation, which started in Tasmania and had profound impacts on transport across Australia, as well as its increasingly important connections to the world beyond.

Holyman House is also of significance because of its design innovations including the technologically advanced riveted steel-frame and concrete construction, early use of an electric lift and neon lighting for signage, and the provision of an airport waiting lounge in the city centre, connected by buses to the planes taking off from the airport at Western Junction. The building also maintained a strong connection to the architects HS East and Roy Smith, who retained offices in the building for 30 years, and the builders J & T Gunn, based next door, who worked together to fulfil the Holymans' ambitious brief, full of firsts for Launceston and northern Tasmania.

### **Why is it significant?:**

The Heritage Council may enter a place in the Heritage Register if it meets one or more of the following criteria from the Historic Cultural Heritage Act 1995:

**a) The place is important to the course or pattern of Tasmania's history.**

Holyman House is of historic cultural heritage significance because of its role in the evolution and success of one of Australia's pre-eminent transport companies, having served as the administration and retail centre for 20 years under the Holyman and Australian National Airlines banner, and over four decades as the base for Ansett Airlines in northern Tasmania.

The Holyman group of companies were largely responsible for opening up trade for remote communities throughout Bass Strait, improving connections between Tasmania and mainland Australia and thus were significant players in the subsequent development of the state and the broader evolution of transport and logistics in Australia. Having been commissioned from leading Tasmanian design and construction companies by such a significant and innovative business, to visually demonstrate their confidence and aspirations through a bold, contemporary (verging on futuristic), and individual design, Holyman House stands as a physical representation of an important part of the history of Launceston, Tasmania, and Australia as a whole.

After the departure of the Holymans, the building continued its strong association with airline and travel operations, being retained as the centre for Ansett Airlines in northern Tasmania, the iconic building becoming synonymous with the 'new' brand, well beyond their departure from the site in 1998.

**b) The place possesses uncommon or rare aspects of Tasmania's history.**

No data recorded.

**c) The place has the potential to yield information that will contribute to an understanding of Tasmania's history.**

Holyman House is of historic cultural heritage significance because it was the administration and customer service centre of a transport company that became one of Australia's largest and most successful airlines, largely responsible for connecting Tasmania to the mainland and the world. While the building is of relatively modern construction and the interiors are not entirely intact, there is potential for further research on the site relating to the history of its designers, the people who commissioned the building and worked within it, and its use as a de-facto airline terminal, which may be useful in furthering the understanding of the significant history around the building. A particular area of interest is the use of part of the ground floor for the movement of ANA passengers and baggage from the city to the airport at Western Junction by company buses. As the pre-construction plans precede this use, showing instead the provision of a large 'motor showroom' space, it is not evident from information available exactly how this terminal use operated.

**d) The place is important in demonstrating the principal characteristics of a class of place in Tasmania's history.**

Holyman House is of historic cultural heritage significance because of its ability to demonstrate the principal characteristics of a five-storey stuccoed concrete encased steel-framed Moderne Art Deco commercial building from the Inter-war period, standing as an exceptional example of this form in Tasmania. Designed by local architects HS East and Roy Smith and built by local builders J & T Gunn, one of Tasmania's largest and most successful construction companies, the building was described as the largest office block in Launceston at the time, and one of the most striking.

The bold form and futuristic detailing of the building, and especially its corner-piece puncturing the skyline, are typical of the Moderne Art Deco or Jazz Age style and clearly representative of the technical innovation, risk taking nature, and commercial success of the company which commissioned it. Holyman House also includes the curved corner and horizontal banding reminiscent of ocean liners and typical of Streamline Moderne architecture, which appear to make obvious connections with the Holymans' origins and continued involvement in shipping. This style is also present in the sweeping curved staircases preserved as bold features of the interior. Many examples of high quality Art Deco detailing have also been retained. These include the large steel framed windows, original signage, doors and door furniture, timber linings, plaster mouldings and stylised chrome plated vents.

The design has endured the test of time with the building still celebrated as a Launceston landmark and noted as the city's finest example of Art Deco architecture, continuing to present the bold, forward-looking image the company wished to convey at the time it was constructed.

**e) The place is important in demonstrating a high degree of creative or technical achievement.**

Holyman House is of historic cultural heritage significance because of its design innovation including the technologically advanced riveted steel-frame and concrete construction, the early use of an electric lift, and an early example of electric neon lighting in Tasmania, to emblazon the 'Holymans' name on Launceston's skyline.

The building was to be one of the largest built in Launceston at the time, and as time was money, use of the relatively new framing system was intended to enable quick completion and occupation of one floor at a time, while construction of discrete floors continued above. Along with this innovation in construction, the largely streamlined and somewhat futuristic aesthetic of the building (inside and out) is also significant as a physical manifestation of the creative and technical achievements and future aspirations of the company which commissioned it.

**f) The place has a strong or special association with a particular community or cultural group for social or spiritual reasons.**

No data recorded.

**g) The place has a special association with the life or works of a person, or group of persons, of importance in Tasmania's history.**

Holyman House, at 52-60 Brisbane Street, Launceston is of historic cultural heritage significance because of its close association with the Holyman family and the evolution of the business which became one of Australia's largest and most successful transport companies, Australian National Airways (ANA). Individual members of the Holyman family are also noted as being of importance in the history of Tasmania, the most noted being William Holyman, the founder of the original shipping company from which he and his sons quickly expanded and dominated transport across Bass Strait, and his grandson, the airline founder responsible for the procurement of Holyman House, Sir Ivan Holyman. Sir Ivan was recognised for his contribution to the development of the aviation business across Australia, and also for the contribution that ANA made to the nation's war effort under his leadership, including service in Papua New Guinea and South East Asia.

The place also has strong associations with the local architecture and construction companies which were responsible for bringing the Holymans' dream alive in the form of a building to adequately represent both the changing times and the ethos of the group. Both the aesthetic appearance and the innovative technology applied by East and Smith in the design, and by J & T Gunn in the construction of the building, in order to fulfil the ambitious brief were firsts for Launceston, and in some cases Tasmania. The dramatic drawings and photographs of the building helped to consolidate the outstanding reputations of both of these companies. The architectural practice occupied offices in Holyman House from its completion until 1966 and the builder had its headquarters in the adjoining building on Brisbane Street from 1892 through to the 1980s.

**h) The place is important in exhibiting particular aesthetic characteristics.**

Holyman House is of historic cultural heritage significance because of its particular aesthetic characteristics and their ability to capture the imagination of residents and visitors alike, enriching Launceston's skyline and clearly contributing to the image of ANA and the Holyman group as leaders and innovators in transport and business. The dynamic form and detailing of what is now referred to as Moderne Art Deco style, was intended to represent the confidence and grand aspirations of the forward-looking company in terms of both future growth and technological innovation. Nearing completion, Holyman House was described in the press as a 'fine new building' of 'striking appearance...finished inside and out in a style and manner the equal of any office block in Australia' and was anticipated to 'set a new standard for Brisbane-street architecture' (*Examiner* 9 January 1937, p.9).

Standing on its prominent corner site, the imposing building with its towering beacon was the headquarters, and literally the flagship, of the ground-breaking company which commissioned it, and continues to stand as a landmark for the city of Launceston. The emotive image of Holyman House is frequently reproduced in photographs and is celebrated by architects, Art Deco groups and airline and transport history buffs alike, its architectural symbolism recalling a time when the future was whole-heartedly embraced. Connections also continue to be made with the largely intact Art Deco interior of the building, even being used as a backdrop for performance art.

**Heritage approval is required for work that will result in changes to the nature or appearance of the fabric of a Heritage place, both internal and external.**

**Please refer to the Heritage Council's Works Guidelines ([www.heritage.tas.gov.au](http://www.heritage.tas.gov.au)) for information about the level of approval required and appropriate outcomes.**

**Heritage Advisors are also available to answer questions and provide guidance on [enquiries@heritage.tas.gov.au](mailto:enquiries@heritage.tas.gov.au) or Tel 1300850332**

**This data sheet is intended to provide sufficient information and justification for listing the place on the Heritage Register. Under the legislation, only one of the criteria needs to be met. The data sheet is not intended to be a comprehensive inventory of the heritage values of the place, there may be other heritage values of interest to the Heritage Council not currently acknowledged.**

**Setting:**

Holyman House, at 52-60 Brisbane Street, Launceston is located in Northern Tasmania, in the geographic and business centre of the city which is widely known for its well-preserved human-scale streetscapes of largely Victorian era buildings. The building occupies a prominent site on the corner of Brisbane and George Streets, two of the main business and retail streets and forms a substantial part of two historic, if eclectic, urban streetscapes, including other examples of Art Deco and Modernist architecture as well as significant buildings of Victorian and Federation era revivalist styles.

The corner site diagonally opposite Holyman House was home to Trans Australian Airlines (TAA) and later Qantas, the main rivals of Australian National Airways (ANA), later Ansett Airlines. The four-storey modernist building purpose-built for TAA in the early 1980s, forms a physical counter-balance to Holyman House on the opposite corner, but does not compete with either its scale or grandeur.

**Description:**

Holyman House, at 52-60 Brisbane Street, Launceston is a five-storey commercial building commissioned by Wm. Holyman and Sons Pty Ltd to house a booking hall, shopfronts, and offices for the Holyman group of companies, as well as tenants (*Examiner* 21 May 1936, p.7). The building was designed between 1935 and 1936 by HS East (ARIBA, FRAIA) and Roy Smith (FRAIA) Architects of Launceston (HS East and Roy Smith Architects 1935, 1936) with the Melbourne based Clive Steel as consulting engineer, and construction being undertaken by J & T Gunn from 1936-7 (*Examiner* 2 May 1936, p.9).

The structure is built up to its boundaries to a height of around 20 metres, with a steel frame encased in concrete, the first building in Launceston to use this system (*Examiner* 2 May 1936, p.9). The ground floor shopfront glazing is surrounded by Tasmanian red granite cladding sourced from Coles Bay, while the upper levels consist of concrete panelling with decorative stucco work in a typical Art Deco style and regularly placed vertically proportioned windows with distinctive steel framing. The third floor (top visible storey) is vertically delineated by decorative rendered finials rising above every third window.

The smaller fourth floor structure has a flat roof and is well set back from the street facades. The remainder of the roof to the third floor is flat and parapeted, and at the curved corner to George and Brisbane Streets, an elaborate vertical

protrusion which has been likened to a ship's prow, rises from the parapet to a height of 26 metres, creating a strong and dynamic feature in the streetscape. At the time of construction this element, topped with a flagpole and emblazoned with the Holyman name illuminated with recently developed electric neon tubes, was appropriately described as a 'beacon' (*Examiner* 2 May 1936, p.9).

The building name formed in metal in a font fitting the Art Deco style is attached to the centre of the main façade fronting Brisbane Street. A smaller version of this sign is located above the entry doors to the offices on the same façade, while a later painted sign occupies the north-western wall, visible from the northern end of George Street. The neon sign to the corner beacon has not survived.

While there have been alterations to the inside of the building to adapt to changing office and retail uses since construction, many elements of the 1937 interiors are still in place. Most notably the curved staircases; custom designed electric lift with stylised chrome plated vents; original amenities arranged around a light and air well, timber wall panelling (including blackwood and other Tasmanian species); distinctive timber, glazed, and strong room doors; matching door furniture; and timber, concrete and plaster mouldings have been retained. Most of the original floor coverings appear to have been replaced. The diagonal blue striped carpets familiar to those who travelled with Ansett in the 1980s-90s appear to have been lost, however some red carpets with gold 'A' shaped logos from the Ansett era survive on the upper office levels.

## History:

The traditional owners of the land in the Launceston region were the North Midlands nation, comprising the Leterremairrener (or Port Dalrymple people), the Panninher (or Norfolk Plains people), the Tyerrernotepanner (or Stoney Creek people) and possibly others (Ryan 2012, p.29). These First Tasmanians traversed and cared for country around kanamaluka/ Tamar estuary for thousands of years before largely being removed by force following colonisation in the 19th century.

The property now known as 52-60 Brisbane Street was part of land first granted to James Walbourn (Folio Plan 124078/1). Smythe's 1835 survey of Launceston includes a building on the site, set back from the corner (Smythe map 1835) and former Launceston resident George Fuller recalled the building: 'a hotel, stood back from the road, verandah fronting both streets, sign 'The Union Inn' kept by Mr Clark' (Szalay [ed.] 2003, p.21). By 1880 The site was re-developed with a two-storey masonry Italianate style structure built up to the boundaries fronting Brisbane and George Streets and a conjoined single storey building later attached to the adjacent J & T Gunn Building (THR #12093). The corner was occupied by Blundell's China and Glass Emporium. By 1910 an elegant verandah fronted George Street (QVM:1995:P:0459). It appears that these buildings remained on the site at least until its purchase by the Wm. Holyman and Sons Pty Ltd between July 1933 and June 1935 (*Tasmanian Government Gazettes*, Launceston assessment rolls 1933-36).

## The Holymans in Australia

It was with the desertion of the seaman William Holyman (1833–1919) from his ship in George Town in 1854, that the family which became the 'Holyman dynasty' established themselves in northern Tasmania. Leaving England on the barque Elizabeth Ratcliffe around 1850, a teenage William Holyman served as an apprentice under a captain said to have treated him so cruelly that he was driven to jump-ship in Tasmania in 1854 (*Examiner* 6 April 1935, p.11). It was reported that following punishment on the treadmill, William was able to settle on the north-west coast of Tasmania and marry Mary Ann Sayer, with whom he raised a daughter, Susannah, and three sons who also became seafarers. William worked on barges and commanded the ketch *Cousins* trading along the coast before buying his first boat (Ellis 1972). From these humble beginnings William and his boys built a shipping company which traversed the often-treacherous Bass Strait for trade and transport, moving cargo and passengers between Tasmania and the mainland, providing much needed supplies to remote island communities, and by 1916 had acquired a number of the islands it served on its routes (Holyman cited in Alexander 2006). William Snr, Thomas, William Jnr, and James all captained their own ships and were active in the development of the company, but it was the second son William Jnr and his family, who led the company into the 20th century (Johnston and Burgess 2021, p.292).

There were downturns in the economy due to the wars and depressions of the early 20th century, but despite these, the Holyman company continued to grow. Capitalising on their success in shipping, the third generation of Tasmanian Holymans began investing in the automotive industry in 1930, including the Rapson Tyre and Rubber Company (THR #4325), before moving into the airline business with the purchase of the Tasmanian Aerial Service in 1932.

The charge into aviation was led by William Jnr's son Victor Clive Holyman (1894–1934) following his time as a pilot in Britain's Royal Naval Air Service and the RAF. His experience included active service flying on the Western Front in World War I, but his time was cut short when one of his new Holymans Airways aircraft went down over Bass Strait. This left Victor's brother, Sir Ivan Nello Holyman (1896–1957), who had taken over management of Wm. Holyman & Sons Pty Ltd following his father's death in 1921, to take over the airline side of the business (Strahan 1996).

Sir Ivan, also known as Captain Holyman, began his career as a clerk in the Holyman's Launceston office, but also

served at Gallipoli and on the Western Front during World War I, service for which he was awarded the Military Cross in 1918. He was also highly regarded in business and social circles and served on many Tasmanian and national boards, finally being appointed KBE in 1956 (Strahan 1996).

### **The Holyman legacy**

By 1934 Holyman Airways had combined with two more airlines and established Australian National Airways (ANA) which became the dominant player in aerial transport across Australia, before being taken over by Ansett Airlines in 1957 (Holyman cited in Alexander 2006). At its peak ANA had nearly 4000 staff running more than thirty aircraft and the 'longest internal route mileage of any airline in the world', 'carrying 9 times more passengers than its closest competition' in 1945-46 (Yule 2001, p.1). The airline also made a significant contribution to Australia's war effort including service in Papua New Guinea and across South East Asia (Johnston and Burgess 2021, p.170).

While the Holyman Company legacy is undoubtedly centred around transport, the company continued to diversify between the wars, moving into the timber industry with Tasmanian Board Mills in 1933 and the Alexander Patent Racket Company (THR #11039) in 1944; hotels in 1946 including the purchase of Hobart's Wrest Point Riviera Hotel, later developed as Wrest Point Casino (THR #7496); and food production with the Dewcrisp hydrated vegetable factory in Scottsdale in 1948 (Holyman cited in Alexander 2006).

Later the family, led by James' son Keith Holyman (1911-2003), his son Robin (1938-), and Robin's son Thomas (1962-), developed a comprehensive land based freight delivery network which operated throughout Australia and New Zealand. The main shipping and freight company, then known as Wm. Holyman and Sons, was gradually taken over by Thomas Nationwide Transport (TNT) during the 1970s (Johnston and Burgess 2021, p.210), but the Holyman name and descendants of the founding family, continued to be associated with shipping and freight companies operating around the world into the 21st century (Adamson 9 March 1995).

### **The move to Launceston**

The original Holyman company initially operated out of Devonport, but around 1900 administration shifted to Launceston and in 1919 they built what are now known as the Embankment Offices (THR #4204) on Launceston's Esplanade fronting the wharf area of the North Esk River (*Sunday Examiner* 21 June 2020, p.36). In 1932 this building was advertised as the Head Office for 'Wm. Holyman and Sons Pty Ltd Shipowners, Customs, Forwarding, Insurance and Commission Agents' (Johnston and Burgess 2021, p.73), but with the company's move into the airline industry in the same year, it would not be long before operations would outgrow this site and seek a new premises to fit their expanding business enterprises and aspirations for the future.

### **The Holymans' building for the future (1936-)**

By 1935 Wm. Holyman and Sons Pty Ltd had purchased a high profile site on the northern corner of Brisbane and George Streets, then three properties, 52, 54 and 60 Brisbane Street (*Tasmanian Government Gazette*, Launceston assessment rolls 1933-36), for the purpose of building their new headquarters. Following their completion of modern offices for the Holymans in Hobart in 1934-35 (THR #10183), the Launceston based partnership of HS East (ARIBA, FRAIA) and Roy Smith (FRAIA) Architects were engaged to create what was to be the Holymans' flagship building in Launceston. With the assistance of Melbourne based consulting engineer Clive Steel (*Examiner* 2 May 1936, p.9), detailed designs were prepared by September 1935 and construction drawings were produced in February 1936 (HS East and Roy Smith Architects 1936).

The building was originally intended to 'house the offices of the various Holyman shipping and airways interests, a booking hall for air and sea passages, a motor showroom, and a large shop on the ground floor' (*Examiner* 21 May 1936, p.7). It was reported that there would be space set aside for additional office tenancies on the upper floors and a restaurant with a roof-top outdoor dining area, however the restaurant did not eventuate, and in place of the showroom at ground level, ANA operated their departure lounge from which passengers were bussed to the airport at Western Junction (*Sunday Examiner* 21 June 2020, p.36).

It is evident from the resulting design, an outstanding example of what is now described as Moderne Art Deco style, that the architects' brief was to produce a building which would be the physical manifestation of the innovation, self-determination, and subsequent success of the Holyman family businesses. It was clearly an ambitious project, becoming 'Launceston's largest office block' (*Examiner* 2 May 1936, p.9) utilising a relatively new structural system, reportedly the first use of riveted steel framing encased in concrete in Launceston (*Examiner* 2 May 1936, p.9) and early use of an electric lift and electric neon lighting to emblazon the 'Holymans' name on the night sky.

Local building firm J & T Gunn, one of Tasmania's largest and most successful construction companies with an impressive legacy of significant Victorian and Federation era buildings to their credit, took on the challenge of this very

new type of building, winning the tender with a price of £30 000 and undertaking construction in stages between 1936 and 1937 (*Sunday Examiner* 21 June 2020, p.36). When excavations commenced it was noted that a watercourse flowed through the site. A selection of the waterworn stone found was incorporated into the southern parapet as a 'memento' (Roach cited in Lyons 1998, p.75).

The use of steel framing and concrete was intended to speed up occupation of the building as each floor could be completed and in use while the floors above were being constructed. After commencement of work it was reported that the architects expected 'the ground floor to be ready for occupation within six months, the first and second floors within eight months, and the whole building within a year' (*Examiner* 21 May 1936, p.7). While this would have seemed ambitious at the time, by January 1937 all of the Holyman operations, and a number of other tenants had moved in to Holyman House (*Examiner* 9 January 1937, p.8).

The building was completed by 1 March 1937 (*Mercury* 1 March 1937, p.6) and its much anticipated opening made it into the *Examiner's* list of 'Outstanding Commercial Events in 1937' (*Examiner* 1 January 1938, p.4).

### **Holyman House post-ANA (1957–)**

Following the purchase of ANA by Ansett Airlines, operations continued under the Ansett name and Holyman House was retained as its northern centre for over 40 years, with the building being purchased by Ansett in 1980 (*Sunday Examiner* 21 June 2020, p.36). It was only vacated on 28 June 1998 (*Examiner* 31 March 1998) following the take-over of Ansett by Air New Zealand in 1996, and a steady down-turn, resulting in substantial job losses across Australia (Thomas 2019). Over those 40 years the iconic building became synonymous with the Ansett name and their airline and travel centre operations, so that even beyond the departure of Ansett in 1998, and the company's ultimate demise in 2002, many locals continue to refer to Holyman House as the 'Ansett building' well into the 2020s.

At the time of writing, the ground floor of Holyman House was occupied by a travel centre and a newsagency, the upper levels managed as a suite of separate office tenancies and a penthouse apartment, all accessed via the original stairway and lift to the eastern side of the building. Tenants include an architecture firm, education, counselling, healthcare, and marketing offices.

The building continues to stand as a celebrated landmark of the city of Launceston and an icon of Art Deco design, featuring prominently in the work of established published photographers such as Thomas Ryan, the dynamic symbolism recalling a time when the future was whole-heartedly embraced. Connections also continue to be made with the interior of the building, notably being used as a backdrop for performance by artists including Finn Meri Heitala. Remnants of Holyman branding and Ansett Airlines carpet survive in parts of the building reminding tenants of its former use.

### **HS East and Roy Smith, Architects**

Born in Launceston, Hubert Springford East (1868-1947) was a gifted architect working mostly within the Arts and Crafts tradition. He was articled to local architects LG Corrie & Alexander North before moving to Melbourne in 1889 and then on to London where he would run his own practice following time in South Africa from 1902 to 1908. In the fifteen years following his 1921 return to Launceston, he would design over 50 houses (Neale cited in Goad and Willis 2012, p221-2). An extensive archive of architectural drawings from East's work across the world are held by the Queen Victoria Museum and Art Gallery in Launceston.

Roy Sharrington Smith (1892-1971) was of the next generation, also born in Launceston, but indentured to Robert Ricards of Ricards & Heyward in 1909 and attending Hobart Technical College under Lucien Dechaineaux in 1915. A budding Modernist, Smith joined the Federal Capital Commission in Canberra from 1925 and practiced in Sydney, London, and Dublin before returning home in 1932 (Valentine cited in Goad and Willis 2012, p.636). In Launceston he formed a partnership with Hubert East, the resulting firm finding success with the design of numerous schools, churches, houses, and commercial buildings, the most notable being the Launceston Gas Company Offices (THR #4557) of 1940 and Holyman House. Roy Smith was also a founding member of the Royal Australian Institute of Architects in 1929 and the Tasmanian Branch of the National Trust of Australia in 1960, remaining the senior architect of the National Trust (Tasmania) until his death (p.636). The practice maintained a strong relationship with Holyman House, their office occupying the building from its completion until around 1966, by then trading as Roy Smith, Newman and Green.

### **References:**

Adamson, G 9 March 1995, 'Getting on with business after the freight of its life', *Australian Financial Review*, accessed 6 September 2023.  
<https://www.afr.com/companies/getting-on-with-business-after-the-freight-of-its-life-19950309-k6ah6>

Ellis, W F 1972, 'Holyman, William (1833–1919)', *Australian Dictionary of Biography*, National Centre of Biography, Australian National University, published first in hardcopy 1972, accessed online 18 September 2023.

<https://adb.anu.edu.au/biography/holyman-william-3788/text5991>

Holyman, R 'Holyman Family' in Alexander, A (ed.) 2006, *Companion to Tasmanian History*, Centre for Tasmanian Historical Studies, University of Tasmania, Hobart.

HS East (ARIBA, FRAIA) and Roy Smith (FRAIA) Architects September 1935, design drawings - 'Proposed New Building for Wm. Holyman & Sons Pty Ltd, Launceston, Tasmania'.

HS East (ARIBA, FRAIA) and Roy Smith (FRAIA) Architects February 1936, signed contract drawings - 'Proposed New Building for Wm. Holyman & Sons Pty Ltd, Launceston, Tasmania'.

Johnston, F and Burgess, J 2021, *Holyman's of Bass Strait*, Ivan D Holyman, Belleview Hill.

*Mercury* 25 January 1935, 1 March 1937.

Neale, A 'East, HS' in Goad P and Willis J 2012, *The Encyclopedia of Australian Architecture*, Cambridge University Press, Port Melbourne.

QVMAG Collection (QVM:1995:P:0459), Photographer unknown.

Roach, R in Lyons B 1998 *All Gunns Blazing: J & T Gunn and the Development of Launceston 1871-1997*, Foot and Playsted, Launceston.

Ryan, L 2012, *Tasmanian Aborigines: A History Since 1803*, Allen & Unwin, Sydney.

Szalay, M [ed.] 2003, *Recollections of Launceston: 1836-1847*.

Selby, C Summer 2009, 'Launceston in style', *Forty South Tasmania* - Issue 51, Cambridge.

Smythe map 1835.

Storey, R Autumn 2016, 'When Art Deco arrived in Victoria', *Spirit of Progress, Journal of the Art Deco and Modernism Society of Australia* - Issue 65, Camberwell.

Strahan, F 1996, 'Holyman, Sir Ivan Nello (1896–1957)', *Australian Dictionary of Biography*, National Centre of Biography, Australian National University, published first in hardcopy 1996, accessed online 20 November 2023.

<https://adb.anu.edu.au/biography/holyman-sir-ivan-nello-10531/text18695>

*Sunday Examiner* 21 June 2020

*Tasmanian Government Gazettes*, Launceston assessment rolls 1933-36

Thomas, G 14 September 2019, 'From the Archives: The Ansett Collapse', *Australian Aviation*, accessed online 6 September 2023.

<https://australianaviation.com.au/2019/09/from-the-archives-the-ansett-collapse/#:~:text=On%20September%20%201996%20Air,in%20the%20Australasian%20aviation%20market.>

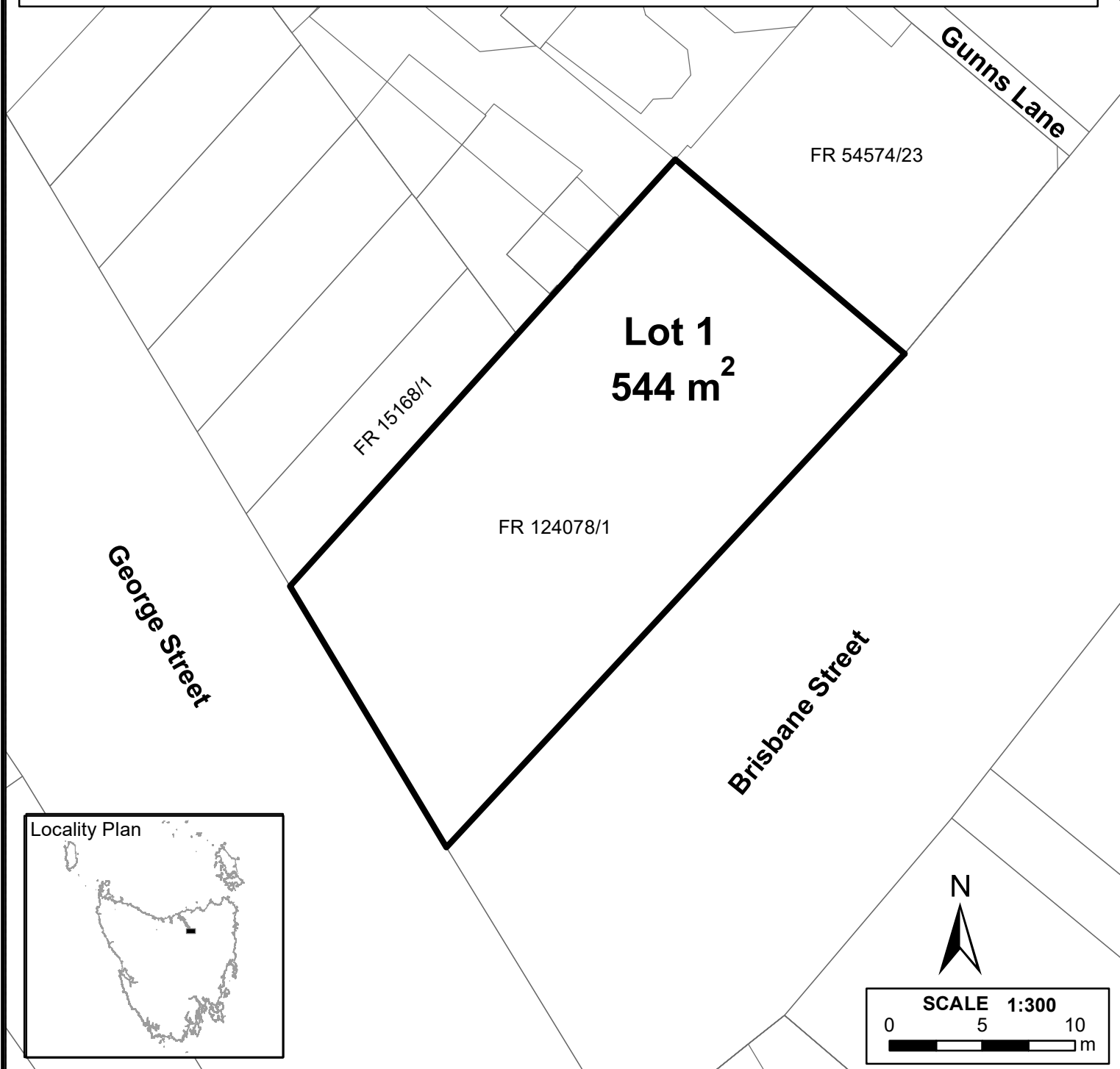
Valentine, B 'Smith, Roy Sharrington' in Goad P and Willis J 2012, *The Encyclopedia of Australian Architecture*, Cambridge University Press, Port Melbourne.

Yule, P 2001, *The Forgotten Giant of Australia Aviation – Australian National Airways*, Hyland House, South Melbourne.

**Images:** *Examiner* 14 December 1935, p.8; *Examiner* 21 May 1936, p.7; *Mercury* 1 March 1937, p.6.

### Note

1. Lot 1 represents the registered boundary for "Holyman House", #12097 on the Tasmanian Heritage Register.
2. Lot 1 is the whole of parcel FR 124078/1, the boundary of which is marked by a heavy black line, details of which can be found in the accompanying datasheet.
3. All boundaries are parcel boundaries unless otherwise stated, details of individual land parcel boundaries may be accessed through the Land Information System Tasmania (LIST).
4. For the purpose of S15(4)(b) of the Historic Cultural Act 1995, this plan replaces the previous registration THR 3886 'Holyman House'.



**TASMAM:** LAUNCESTON - 5041     **GRID:** MGA94 / ZONE 55     **DATUM:** AHD     **CONTOUR INTERVAL:** N/A


No.	PRODUCTION / AMENDMENT	AUTHORITY	REFERENCE	DRAWN	APPROVED	DATE
1	Production	THC	12097	AW	A.ROBERTS	21.12.23



**Holyman House**  
52 to 60 Brisbane St, Launceston

PREPARED BY  
HERITAGE TASMANIA

**CENTRAL PLAN REGISTER**

p.p. Surveyor General: 

Date Registered: 22.12.23

**CPR**  
**11443**