



134 Macquarie Street (GPO Box 618)
Hobart Tasmania 7001
Phone: 1300 850 332 (local call cost)
Email: enquiries@heritage.tas.gov.au
Web: www.heritage.tas.gov.au

Name: Ulverstone State School
Status: Provisionally Registered
Tier: State

THR ID Number: 12078
Municipality: Central Coast Council
Boundary: Whole of Title

Location Addresses

2 LEVEN ST, ULVERSTONE 7315 TAS

Title References

Property Id

6966420



Empire Day at Ulverstone State School
Weekly Courier 29 May 1924 p.28.



Ulverstone State School forecourt and 1916
building
Heritage Tasmania



Ulverstone State School forecourt and 1916
building
Heritage Tasmania



Ulverstone State School forecourt and war
memorial
Heritage Tasmania



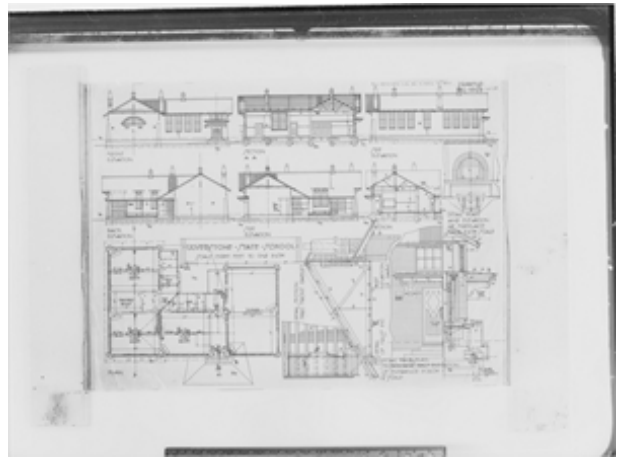
Rear elevation of main 'C' shape building
Heritage Tasmania



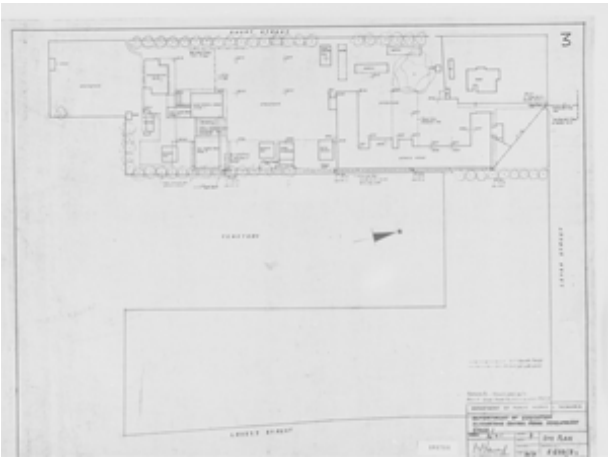
Gawler State School Building
Heritage Tasmania



Kindergarten building
Heritage Tasmania



1916 building plan
Tasmanian Archives PWD266/4/1124 Card.1125



1968 site plan
Tasmanian Archives PWD266/5/51697
Card.101714

Statement of Significance: (non-statutory summary)

Ulverstone State School has historical and social associations with the development and provision of state education infrastructure within Tasmanian communities in the nineteenth and twentieth centuries . Ulverstone State School demonstrates the principal characteristics of a state education facility that has developed and expanded throughout the twentieth and early twenty-first centuries to accommodate increasing enrolments and evolving educational philosophies and teaching methods. During this period Tasmania was nationally recognised as an educational innovator .

Why is it significant?:

The Heritage Council may enter a place in the Heritage Register if it meets one or more of the following criteria from the Historic Cultural Heritage Act 1995:

a) The place is important to the course or pattern of Tasmania's history.

Ulverstone State School has historical and social associations with the development and provision of state education infrastructure within Tasmanian communities in the nineteenth and twentieth centuries. Ulverstone State School demonstrates the principal features of the public-school facilities built, adapted and expanded throughout Australia in response to the increasing population and consequent school enrolments during the early twentieth century. Ulverstone State School incorporates the Gawler State School building, a sizeable Kindergarten building for that time, and a free-standing World War I memorial obelisk.

b) The place possesses uncommon or rare aspects of Tasmania's history.

No Data Recorded

c) The place has the potential to yield information that will contribute to an understanding of Tasmania's history.

No Data Recorded

d) The place is important in demonstrating the principal characteristics of a class of place in Tasmania's history.

Ulverstone State School demonstrates the principal characteristics of a state education facility, constructed in the early twentieth century, that has developed and expanded throughout the twentieth and early twenty-first centuries to accommodate increasing enrolments, evolving educational philosophies and teaching methods. During the early twentieth century Tasmania was nationally recognised as an educational innovator.

e) The place is important in demonstrating a high degree of creative or technical achievement.

No Data Recorded

f) The place has a strong or special association with a particular community or cultural group for social or spiritual reasons.

No Data Recorded

g) The place has a special association with the life or works of a person, or group of persons, of importance in Tasmania's history.

No Data Recorded

h) The place is important in exhibiting particular aesthetic characteristics.

No Data Recorded

Heritage approval is required for work that will result in changes to the nature or appearance of the fabric of a Heritage place, both internal and external.

Please refer to the Heritage Council's Works Guidelines (www.heritage.tas.gov.au) for information about the level of approval required and appropriate outcomes.

Heritage Advisors are also available to answer questions and provide guidance on enquiries@heritage.tas.gov.au or Tel 1300850332

This data sheet is intended to provide sufficient information and justification for listing the place on the Heritage Register. Under the legislation, only one of the criteria needs to be met. The data sheet is not intended to be a comprehensive inventory of the heritage values of the place, there may be other heritage values of interest to the Heritage Council not currently acknowledged.

Setting:

Ulverstone State School is located in the largely residential area of east Ulverstone. The 'U' shaped School grounds wrap around Ulverstone Cemetery. Ulverstone High School, established in 1953, is located approximately 600 metres east of Ulverstone State School.

Description:

Ulverstone State School consists of various elements, including buildings, war memorial and garden, grounds, and open spaces. There are several mature plantings across the site, including two large conifers on the Leven Street boundary, various trees in the forecourt area bounding Leven and Short Streets, and those adjacent to the Gawler State School, Short Street and along the boundary with Ulverstone Cemetery.

1. Main School Building (1916, and additions)

The main school building is formed by a collection of structures that have been added as needed, forming a 'C' shaped building around a courtyard area. The building has a variety of roof forms clad with corrugated iron. The original red brick school building forms an 'L' shape and features buttress detailing to the corners, large multi-paned sash windows, tall brick and stucco chimneys with pots, timbered gable ends, and overhanging eaves. There are enclosed timber verandahs on the southern and western elevations of the building. A red brick c.1962 addition sits in front of the main entrance. The main building extends south with a return to form a 'C' shape. The later classroom extensions are clad with weatherboards and feature banks of multi-paned sash windows. The c.2020 addition to the southern elevation is of no heritage significance.

Internally the building retains several original features, including pressed metal ceiling linings, cornices, joinery and timber floors.

2. War Memorial (1918, 1922), Frank MacDonald Memorial Garden

The World War I memorial sits in the forecourt of the main school building, accessed from Leven Street. It is a low stone obelisk centrally set on a concrete plinth. Names of 33 former students who served in World War I are carved in marble panels attached to each side. An additional plaque has been placed on the memorial in memory of Frank MacDonald, the last surviving veteran from Tasmania and an Alumnus of Ulverstone State School (1904-1911). An information panel about Frank MacDonald sits in a garden area bounded by Leven Street, with mature tree plantings and low shrubbery.

3. Gawler State School Building (1909, relocated 1949)

Gawler State School is a small free-standing building clad with weatherboards. It has a gabled corrugated iron roof, a single tall brick chimney and Tobin ventilation tube. There are large sash windows on the northern elevation, a single multi-paned sash window on the southern elevation, and a doorway on the western elevation. A skillion roof addition clad with vertical boards is attached to the eastern elevation.

4. Kindergarten (1944)

The Kindergarten is a rectangular shaped red brick building with large vertical banks of windows on the northern elevation. An 'L' shaped structure wraps around the southern and western elevations, and features porthole window details. The Kindergarten building is attached to the former Infant School classrooms and Multi-purpose hall.

5. Infant School classrooms (c.1960s) and multi-purpose hall (1982)

A collection of once free-standing brick classroom buildings with a central open space that has been enclosed with the construction of a multi-purpose hall.

6. Library and Administration Building (1970s)

The Library and Administration building is constructed from brick with aluminium framed windows and a low-pitched roof. The c.2016 additions to the building are of no heritage significance.

7. Staff Room building (c.1990s)

Later red brick building that sits adjacent to the main school building is of no heritage significance.

History:

Education in Tasmania

In Tasmania attendance at school was made compulsory in 1868, and a new Education Act in 1885 established the Department of Education, however significant reform did not occur until the early twentieth century. During this period a series of Directors of Education (WL Neale, WT McCoy and GV Brooks) initiated an ongoing revitalisation of public education in Tasmania following the principles of the 'New Education' movement – modernising the primary curriculum, improved recruitment and training of teachers and upgrading school facilities. During the early twentieth century Tasmania was nationally recognised as an educational innovator (Sprod 2005, pp.113-115).

Ulverstone

Ulverstone was first gazetted in 1861. A timber industry developed in the area during the 1840s, and as timber was removed, agriculture was established. Ulverstone was linked to rail in 1890, giving a boost to farming and a steady growth in population (Harman 2005, p.372).

Ulverstone State School

A State school was established in Ulverstone in 1870, housed in a weatherboard building that accommodated 120 pupils ('Ulverstone Primary School 1870-1995' 1995, p.4; *North West Post* 2 Sept 1916 p.3). Other schools established in Ulverstone during the late nineteenth century included one conducted in a private residence, and a Catholic School. Various State schools were also established in small rural towns such as Castra, Gawler and Sprent, in the area surrounding Ulverstone/Leven (*Advocate* 17 March 1936 p6). Joseph Lyons, the tenth Prime Minister of Australia 1932-1939, attended Ulverstone State School from 1885 to 1887. Lyons was Treasurer of Tasmania from 1914 to 1916, when the new school building was constructed at Ulverstone (*Advocate* 29 Dec 1924 p.8).

A new school building

Ulverstone was a town rapidly growing in the late nineteenth and early twentieth century (*North West Post* 11 Sept 1915 p.6c.2). A new timber infant classroom was constructed c.1910 to accommodate increasing enrolments ('Ulverstone Primary School 1870-1995' 1995, p.4).

Ulverstone parents formed an Association in 1915 that lobbied and petitioned for improved school accommodation, specifically brick buildings (*Examiner* 6 Sept 1915 p.6). An inspection of the school buildings in August 1915 found that the accommodation was 'totally inadequate' (*North Western Advocate and Emu Bay Times* 7 Aug 1915 p.4). In September 1915 advice was received from the Director of Education that the Minister of Education had agreed to construct the nucleus of a brick school at Ulverstone; three brick rooms, similar to those recently built at Wynyard State School (*Examiner* 6 Sept 1915 p.6). The new school building was designed by the Public Works Department, under Chief Architect Mr RF Ricards, with the intention of adding classrooms in the future (Tasmanian Archives PWD266/4/1124, Card No.1125).

The new building was opened in late 1916 by the Premier of Tasmania, Mr W.H. Lee. A photograph from the opening shows the new brick building sitting between the 1870 weatherboard schoolhouse and the c.1910 infant school (*Tasmanian Mail* 14 August 1916 p.19; see full account in *Examiner* 2 Sept 1916 p.5.c.4-5).

In 1922 a monument was unveiled in the school grounds to the memory of old boys who died serving in World War I (*Advocate* 24 May 1922, see image from *Weekly Courier* 29 May 1924 p.28).

Enrolments passed 400 students in 1925. A new classroom was constructed on the southern elevation of the 1916 building, expanding the school to four rooms (*Advocate* 24 February 1925 p.4). In 1928 additional classrooms were added and several alterations made to the 1916 building; the 1870 timber building was demolished to make way for the additions (Tasmanian Archives PWD266/4/1118 Card No.1119; *Advocate* 23 November 1928 p.4). A Headmaster's residence was constructed on the corner of Leven and Short Streets c1928, which was demolished in the late twentieth century.

A site plan of Ulverstone State School dated June 1932 records that there were six classrooms; rooms were added to each side of the Infant's Classroom, and a Domestic Science room was added to the southern elevation of the main building in 1936 (Tasmanian Archives PWD266/4/1123 Card No.1124, PWD266/4/1120 Card No.1121, PWD266/4/1111 Card No. 1112, PWD266/4/1117 Card No.1118).

In 1944 a new kindergarten was built, south of the main school buildings, demonstrating a more 'Moderne' style building (Tasmanian Archives PWD266/4/1104, Card No.1105, PWD266/4/101734 Card No.101735). Ulverstone was the first State school to have a kindergarten of such dimensions (*Advocate* 12 Dec 1944 p.6).

The Library was located in various parts of Ulverstone State school, until a purpose-built library was constructed in the 1970s ('Ulverstone Primary School 1870-1995' 1995, p.5).

Gawler State School

In March 1949 Gawler State School building, and 32 students, moved to Ulverstone State School ('Ulverstone Primary School 1870-1995' 1995, p.4; Tasmanian Archives PWD54/1/2409). The 'Gawler Room' was used for various purposes, including a classroom and music room.

Increasing post-war enrolments, building additions and Mussett Huts

During the 1950s several Mussett Huts were placed at the southern end of the site (Tasmanian Archives PWD54/1/2409). Between 1949 and 1952 many prefabricated buildings made by EC Mussett and Co were purchased by the Tasmanian government to serve as instant classrooms for increasing student numbers due to the post-war population boom (Matthews 2019). In the 1950s the Public Works Department negotiated with Ulverstone Council to lease an unused section of the cemetery as a playing area that extends along Leven Street and down Lovett Street, leading to the current U-shape of the school site, with the cemetery in between (Tasmanian Archives PWD54/1/2409; 'Ulverstone Primary School 1870-1995' 1995, p.4). The construction of two classrooms (1953) and a staff room (1955)

created a 'C' shaped complex of buildings (Tasmanian Archives PWD266/5/51709 Card No.101726, PWD266/5/51721 Card No.101738).

New schools, renamed Ulverstone Central School

Student numbers at Ulverstone State School continued to increase, prompting the construction of West Ulverstone Primary School (1958) and East Ulverstone Primary School (1963) ('Ulverstone Primary School 1870-1995' 1995, p.4). Ulverstone State School was renamed Central Primary School following this.

By 1962 a small flat roof extension was constructed on the northern façade of the 1916 building, directly in front of the former main entrance/Headmaster's office (Tasmanian Archives PWD266/5/51694 Card No.101711). By the late 1960s the Infant School was relocated to three individual buildings adjacent to the 1944 Kindergarten building (Tasmanian Archives PWD266/4/20450 Card No.20455). A plan dated 1968 shows a highly developed site (Tasmanian Archives PWD266/5/51697 Card No.101714). A combined Library and Administration building was added to the site in the 1970s, located between the main school building and the Infant School.

In 1982 a General-Purpose Hall was designed by Hudson Roussos Architects, which enclosed the area between the existing Infant classrooms and the Kindergarten (Tasmanian Archives PWD266/5/11354 Card No.61359). A free-standing building with additional classrooms and staff area was constructed adjacent to the main school building c1990s. Throughout the late twentieth and early twenty-first centuries several other alterations and new buildings have been constructed on the site and existing buildings altered to accommodate increasing numbers and evolving teaching practices, including extensions to the existing multi-purpose hall and surrounding classrooms, and alterations to the Library and administration building.

Comparative Analysis

Education in Tasmania during the twentieth century was characterised by the 'New Education' movement led by a series of Directors of Education (WL Neale, WT McCoy and GV Brooks) who revitalised public education in Tasmania, including modernising the primary curriculum, improved recruitment and training of teachers and upgrading school facilities. Several school buildings, similar to Ulverstone State School, were constructed in suburban areas across the state during this period, with the intention that they would be extended and added to as numbers of enrolments increased. Other state-wide examples of this planning with buildings of a similar design include Wynyard State School (1915, Community Centre and Guide Hall THR#11756 – nominated, and mentioned in the newspaper account of the opening of Ulverstone State School), Bowen Road School (THR#8316, 1927), Moonah Primary School (not registered, 1917), Glenorchy Primary School (THR#1604, 1926), Campbell Street School (THR#2800, 1926), Princes Street Primary School (THR#8680, 1934), West Devonport Infant School (THR#12043, 1912) and Claremont Primary School (THR#11600, 1924). Contemporary inner-city schools built on a larger scale with two-storey brick buildings include Elizabeth Street State School (THR#2352, 1911) and Albuera Street Primary School (THR#3422, c.1913).

References:

Blythe, R. 'Sydney Wallace Thomas Blythe 1905-1985, Architect and Educator', Masters of Architecture thesis, University of Melbourne, February 1998.

Harman, M. 'Ulverstone' in A. Alexander (2005) *The Companion to Tasmanian History*, University of Tasmania, Hobart.

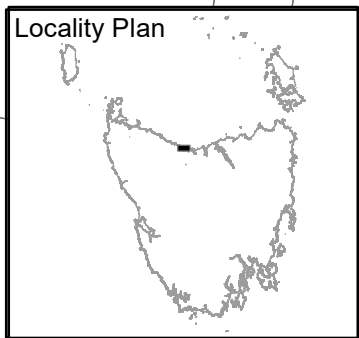
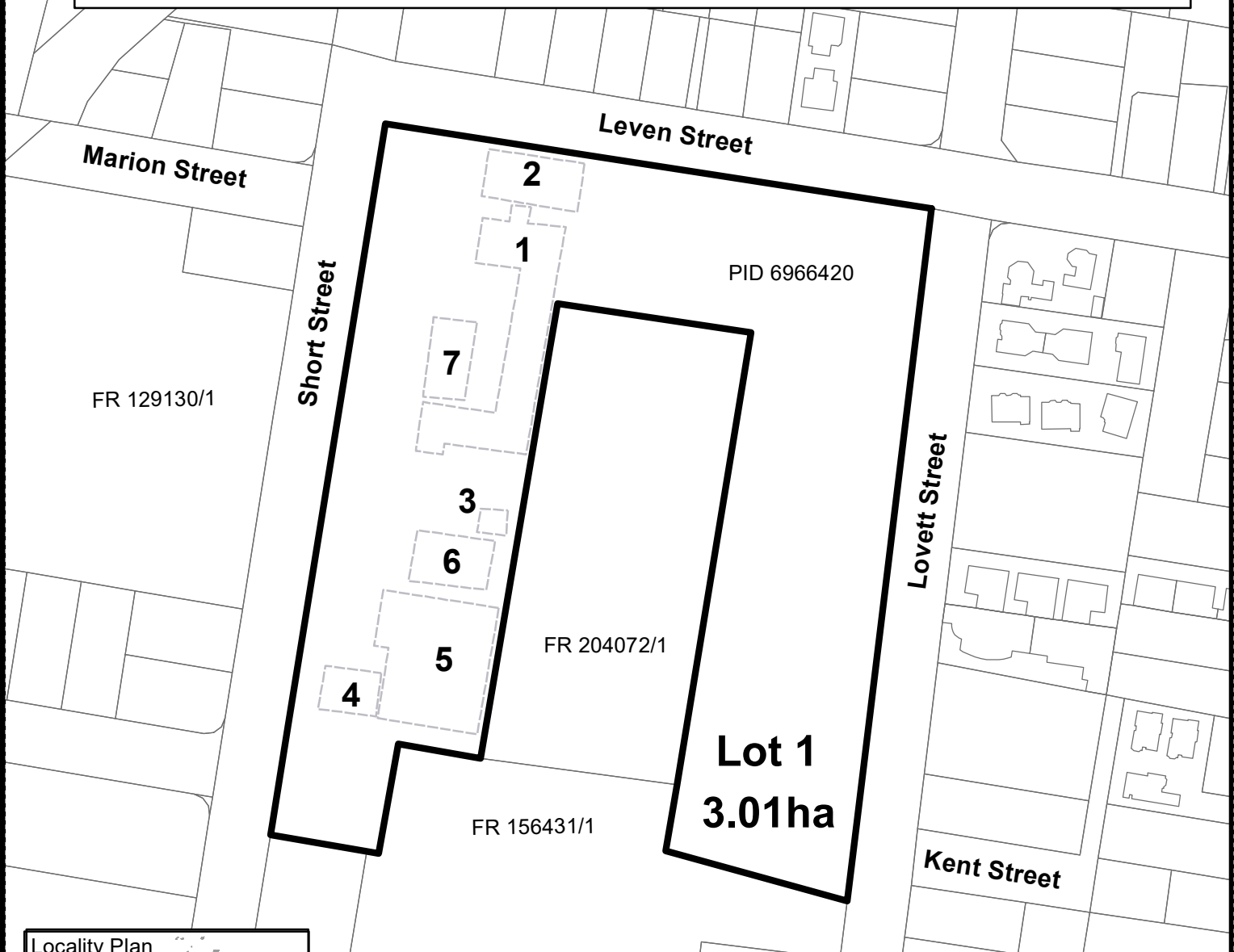
Matthews, J. J. 'The errant British prefab: Origins and context of Tasmania's Mussett Hut' in *Papers and Proceedings: Tasmanian Historical Research Association* Vol.66 Issue. 3, Dec 2019 pp.6-25.

Phillips, D (1985) *Making More Adequate Provision*. Education Department of Tasmania, Tasmania.

Sprod, M. (2005) 'Education' in Alexander, A. (ed) *The Companion to Tasmanian History*, University of Tasmania, Hobart. p113-115.

Note

1. For the purpose of S15(4)(b) of the Historic Cultural Heritage Act 1995, Lot 1 represents the registered boundary for 'Ulverstone State School (Central Primary School Building)', #12078 on the Tasmanian Heritage Register.
2. Lot 1 is the whole of PID 6966420 the boundary of which is marked by a heavy black line.
3. All boundaries are parcel boundaries, details of individual land parcel boundaries may be accessed through the Land Information System Tasmania (LIST).




Key

1. Main School Building (1916 & additions)
2. War Memorial (1918, 1922), Frank MacDonald Memorial Garden
3. Gawler State School Building (1909, relocated 1949)
4. Kindergarten (1944)
5. Infant School classrooms & Multi-purpose hall (1982)
6. Library & Administration Building (1970s)
7. Staff Room building (c1990s)

N

SCALE 1:2,000
0 25 50 m

TASMAM: ULVERSTONE - 4244		GRID: MGA94 / ZONE 55		DATUM: AHD		CONTOUR INTERVAL: N/A	
No.	PRODUCTION / AMENDMENT	AUTHORITY	REFERENCE	DRAWN	APPROVED	DATE	 Tasmania
1	Production	THC	12078	AW	A.ROBERTS	21.12.23	


**Ulverstone State School
(Central Primary School)**
2 Leven Street, Ulverstone

PREPARED BY
HERITAGE TASMANIA




Tasmanian Heritage Council

CENTRAL PLAN REGISTER

p.p. Surveyor General: 

Date Registered: 3.1.24



**CPR
11446**